



18 Sir William McKell Drive, Pambula. NSW 2549 Ph: 02 6495 7877 Fax: 02 6495 7997 email: tom.northdentimber@exemail.com.au
www.northdentimber.com.au



MICK'S COLUMN

Welcome to what seems to be becoming the North Eden **'six monthly news.'** And what a six months

it has been: Doom gloom, doom gloom and more doom and more gloom is all we are hearing from our elected leaders.

Hey guys, you can only blame the pitch for another batting collapse for so long before people get sick of excuses and **look for better batsman...**

It is true though, times are tough and summer was particularly unkind to us as the building industry continued to slow.

Autumn however, has seen us come out fighting and results are positive as we continue to consolidate and concentrate on what we do best: **innovative new products and profiles, alongside a great range of hardwood decking and weatherboard.** We have a true belief in our ability to not only survive this economic crisis but come out the other end of it bigger and better.

So enjoy our newsletter and be assured we are out there, just under the radar, looking after those who have a passion for unique Australian hardwood products and need a supplier who will listen to them.

Mick
northdentimber@exemail.com.au



Enough Decking???

We all have our different ways of working out our quantities but when it comes to hardwood decking. We truly believe the best method is to work out how many square metres you need to cover, divide it by the width of the board you intend to use then add 10% for end docking between joists. For instance if you have 45m² of deck area and want to use an 86mm deck board then this is how you work out what you need:

$$45m^2 \text{ divided by board width } (0.086) = 523 + 10\% \text{ for docking} = 575 \text{ metres}$$

Or even easier

$$45,000 \text{ divided by } 86 \text{ multiplied by } 1.1 = 575 \text{ metres}$$

We often have builders say "I only had a couple of barrows of offcuts so how come I still didn't have enough decking?"

Have a look at this humble builder's barrow and see if you can guess how many metres of decking offcuts are in it:



Answer is on 2nd page

JOKE OF THE MONTH



"Kevin Rudd politely returns a meal that was not quite to his satisfaction whilst on a recent flight from Japan"

Turn over for an ALL NEW PRODUCT and Specials



BIG IS BEAUTIFUL

Big is beautiful is back with a vengeance. Just have a look at some of these:



For a little extra money, the end result of your project can be stunning

AUCTION

You may remember in our last newsletter we mentioned we were going to have an auction to clear old stock and timber seconds. Well we did and we managed to have it on the coldest, wettest, windiest day in history.



Guess what...?

It went just great. We cleared all 285 lots and also managed to raise \$610 for Camp Quality from our sausage sizzle and outdoor setting sale.



"Our wood machinist Todd shows off his cooking skill manning the only dry spot on the day"

We are hoping to have a follow up auction in May or June and will keep you posted on that one.

Answer to the wheelbarrow case: **102 metres**
"did you order enough?"

NEW PRODUCT

New to our range is this 64 x 19 Bevelled Shiplap Weatherboard.



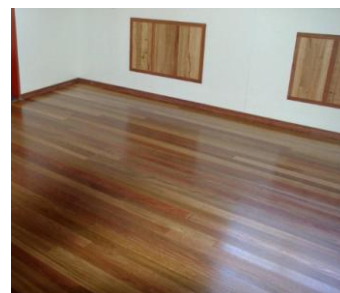
We developed this to help break up those hard to hide walls and give a "batten/screen" like feel while remaining solid and practical:

Remember, if you have a design of your own or a profile you want matched then talk to us. We cut all our own profile knives on site and are more than happy to help create your own individual look.



SPECIALS

Silvertop
 (Fire Retardant)
 125x30 Decking
\$6.39/lm
(\$51.12/m²)



Mixed Hardwood
 80x19 Standard &
 Better Flooring
\$42/m²

Last but not least.....Saul Rankin, these are yours:

